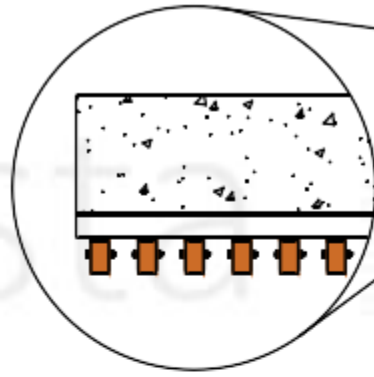
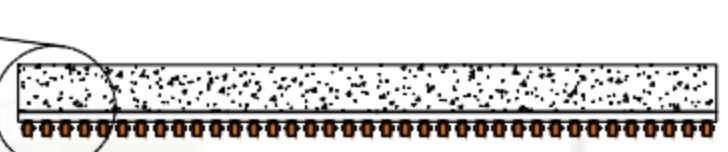


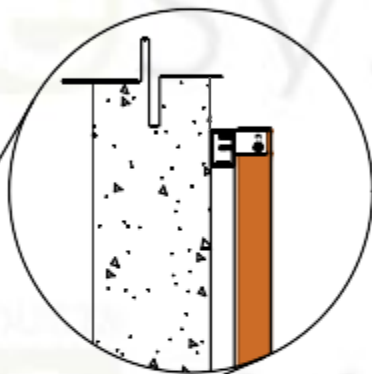
DETAIL-1.0



DETAIL-3.0



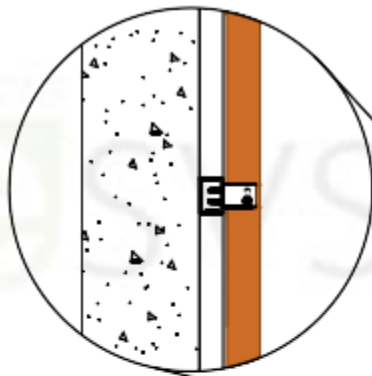
TOP VIEW



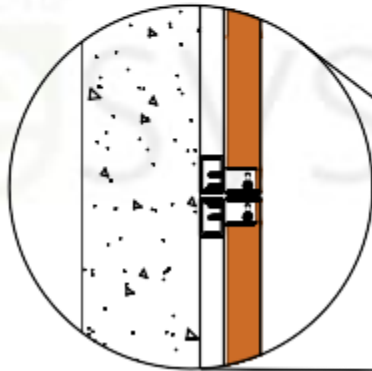
DETAIL-5.0



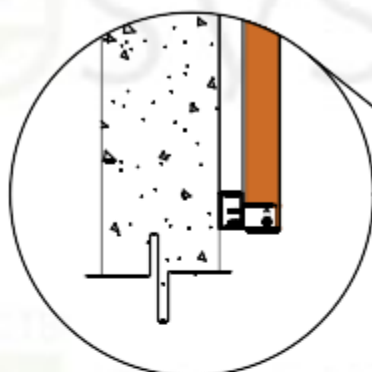
DETAIL-4.0



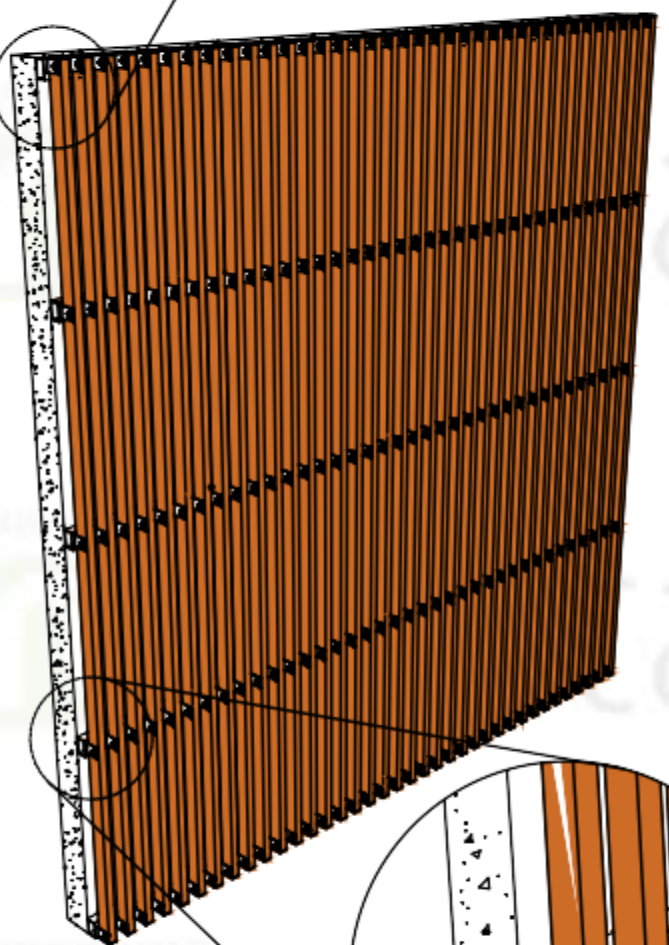
DETAIL-6.0



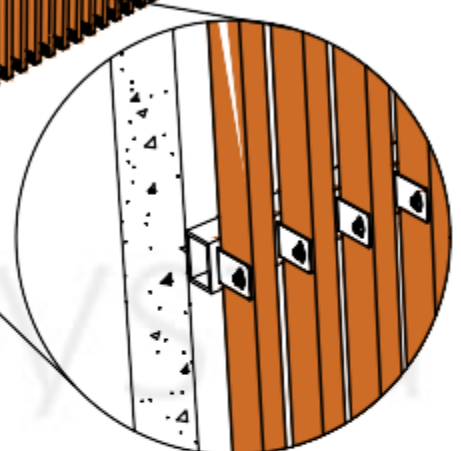
DETAIL-7.0



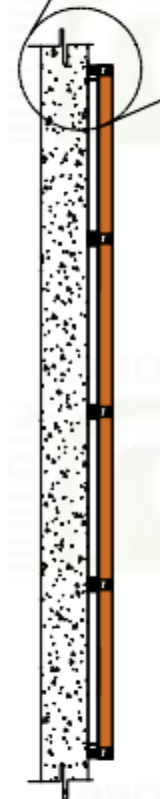
DETAIL-8.0



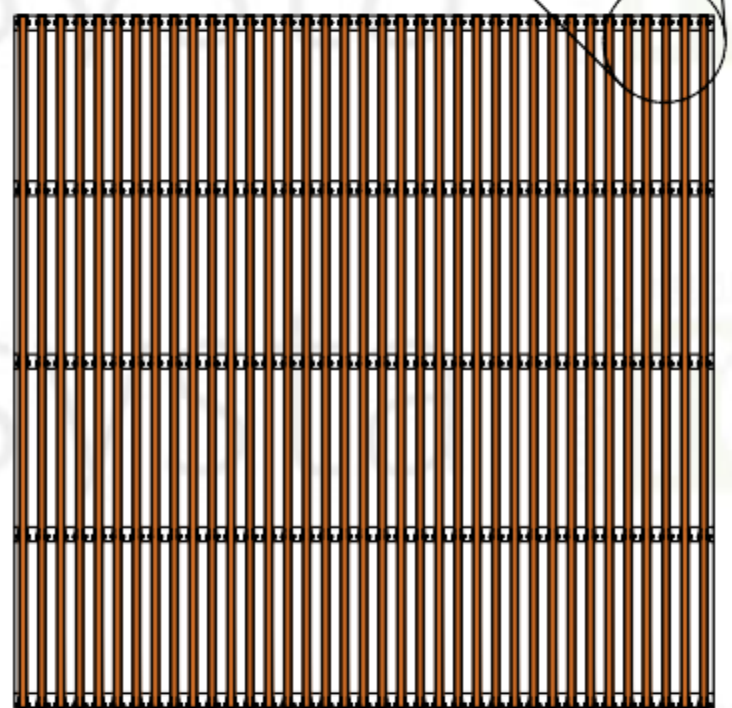
PERSPECTIVE



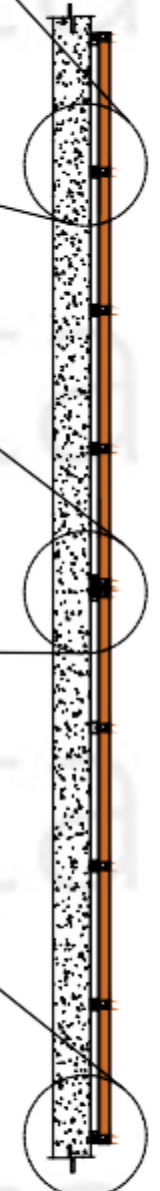
DETAIL-2.0



SIDE ELEVATION



FRONT ELEVATION



MULTI-BOARD SIDE ELEVATION

1
2VCUB

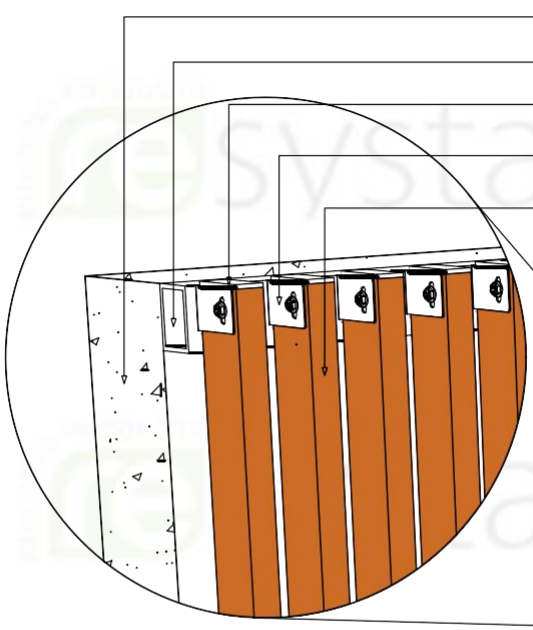
2CH VERTICAL CLADDING U-BRACKET

RESYSTA PROFILE WITHOUT ALUMINUM INSERT (FPH 7038 / 3.5)

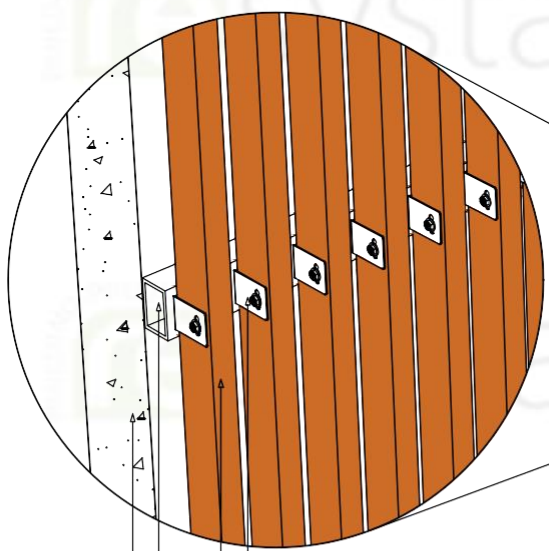


NOTE
THIS DRAWING AS AN INSTRUMENT OF SERVICE, IS THE PROPERTY OF RESYSTA AND AS SUCH MUST NOT BE REPRODUCED OR COPIED IN PART OR IN WHOLE WITHOUT THE PERMISSION OF THE AUTHOR.

TITLE	SPECIFICATION	SHEET CONTENT	SHEET SIZE	DRAWING NO.	CONTINENT
2CH - U Bracket VERTICAL CLADDING DETAIL	TYPICAL DRAWING DETAIL	PERSPECTIVE	A3	2VCUB-1.1	RESYSTA ASIA
		TOP VIEW			
		FRONT ELEVATION	DATE	REVISION	
		SIDE ELEVATION	27.02.23	0	
		MULTI-BOARD SIDE ELEVATION			
	C.A.E	CHECKED BY:			

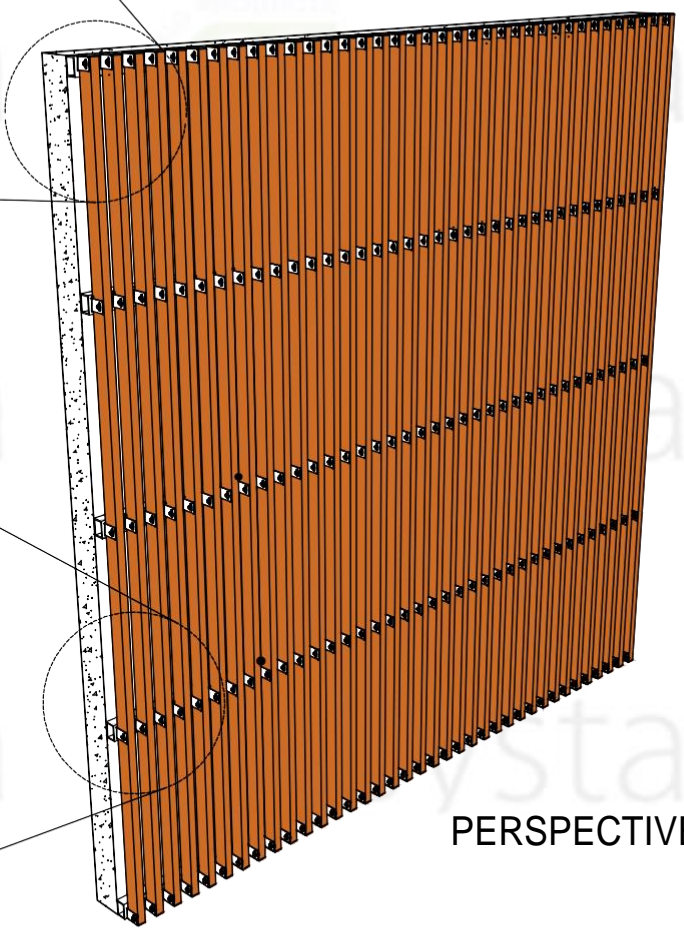


DETAIL - 1.0
END PART



DETAIL - 2.0
MIDDLE PART

- EXISTING WALL
- SUBSTRUCTURE BY OTHERS
- Hollow Cap
- U/B 7038 Aluminum U-Bracket with Bolt, washer and nut
- FPH 7038/3.5 Cladding 2 Channels Thick



PERSPECTIVE

- U/B 7038 Aluminum U-Bracket with Bolt, washer and nut
- FPH 7038/3.5 Cladding 2 Channels Thick
- SUBSTRUCTURE BY OTHERS
- EXISTING WALL

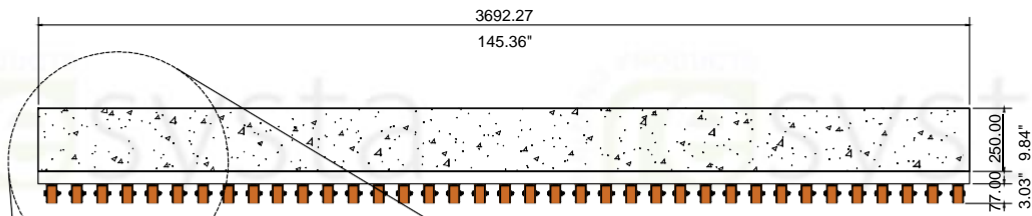
SUB-DETAIL
2VCUB 1.2
N.T.S

DIMENSION LEGEND	
Millimeter (mm)	
Inches (") / Foot (')	

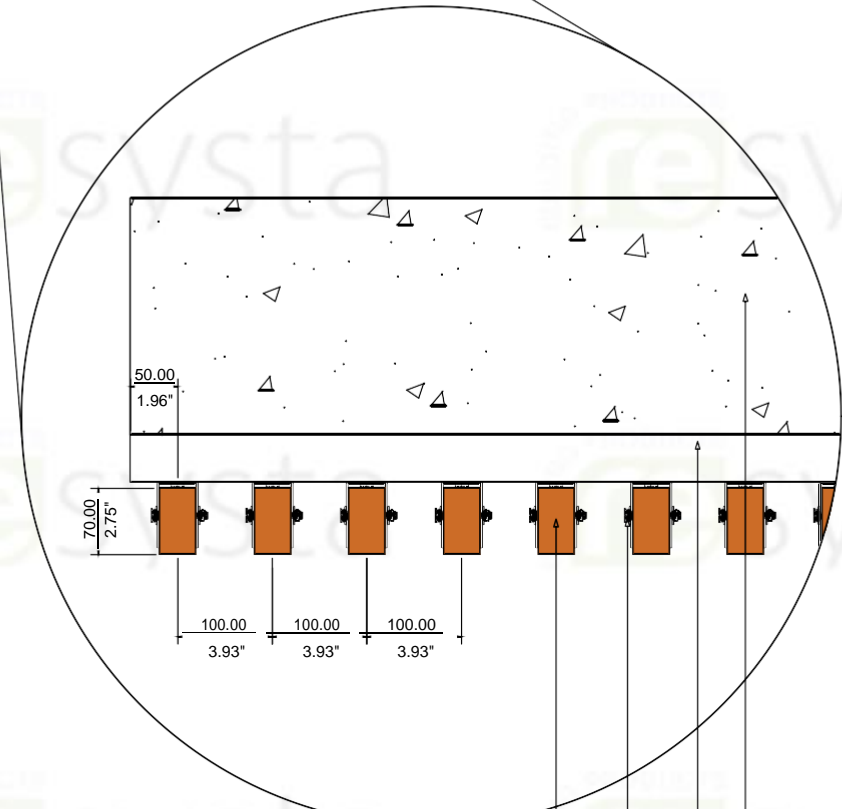


NOTE
THIS DRAWING AS AN INSTRUMENT OF SERVICE, IS THE PROPERTY OF RESYSTA AND AS SUCH MUST NOT BE REPRODUCED OR COPIED IN PART OR IN WHOLE WITHOUT THE PERMISSION OF THE AUTHOR.

TITLE	SHEET CONTENT	CONTINENT
2CH - U BRACKET VERTICAL CLADDING SUB-DETAIL	PERSPECTIVE	RESYSTA ASIA
	DETAIL -1.0	
	DETAIL -2.0	
SPECIFICATION	DRAWING NO.	DATE
TYPICAL DRAWING DETAIL	2VCUB-1.2	27.02.23
	CAD BY:	CHECKED BY:
	C.R.E	



TOP VIEW



FPH 7038/3.5 Cladding 2 Channels Thick

U/B 7038 Aluminum U-Bracket with Bolt, washer and nut

SUBSTRUCTURE BY OTHERS

EXISTING WALL

DETAIL - 3.0

SUB-DETAIL

2VCUB 1.3

N.T.S

DIMENSION LEGEND	
Millimeter (mm)	
Inches (") / Foot (')	



NOTE

THIS DRAWING AS AN INSTRUMENT OF SERVICE, IS THE PROPERTY OF RESYSTA AND AS SUCH MUST NOT BE REPRODUCED OR COPIED IN PART OR IN WHOLE WITHOUT THE PERMISSION OF THE AUTHOR.

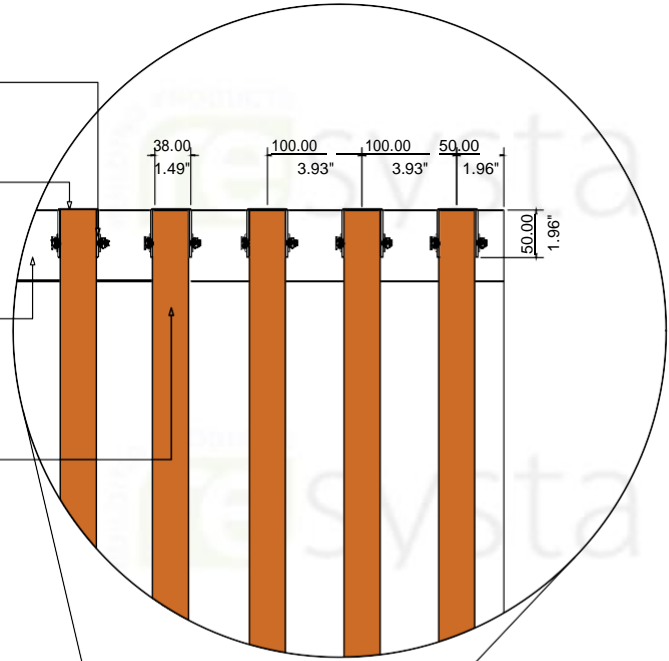
TITLE	SHEET CONTENT	CONTINENT
2LH - U BRACKET VERTICAL CLADDING SUB-DETAIL	TOP VIEW	RESYSTA ASIA
	DETAIL - 3.0	
SPECIFICATION	DRAWING NO.	DATE
TYPICAL DRAWING DETAIL	2VCUB-1.3	27.02.23
	CAD BY:	CHECKED BY:
	C.R.E	

U/B 7038 Aluminum U-Bracket with Bolt, washer and nut

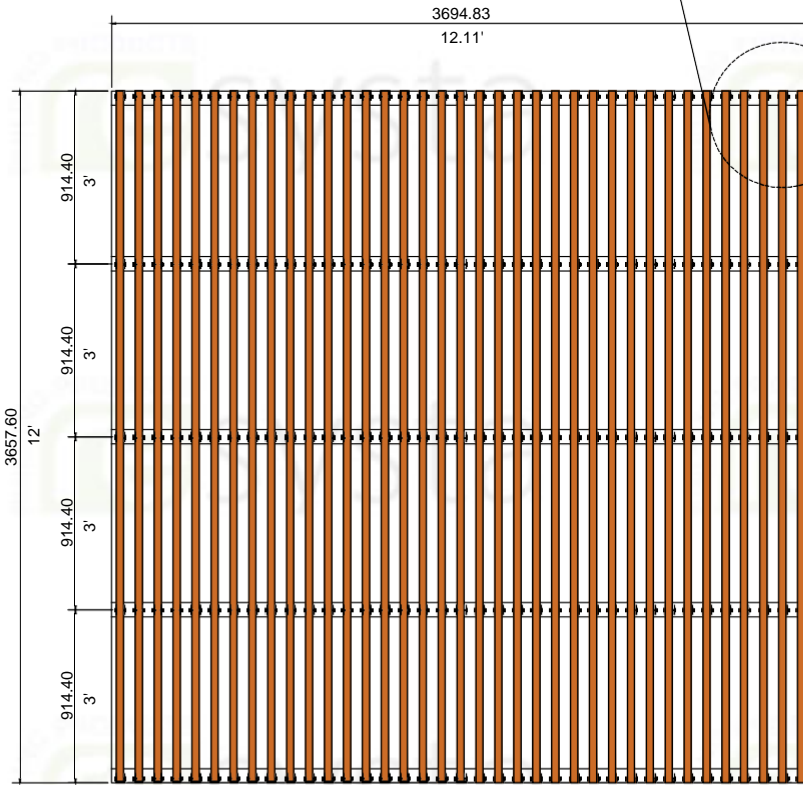
Hollow Cap

SUBSTRUCTURE BY OTHERS

FPH 7038/3.5 Cladding 2 Channels Thick



DETAIL - 4.0



FRONT ELEVATION

SUB-DETAIL

2VCUB 1.4

N.T.S

DIMENSION LEGEND

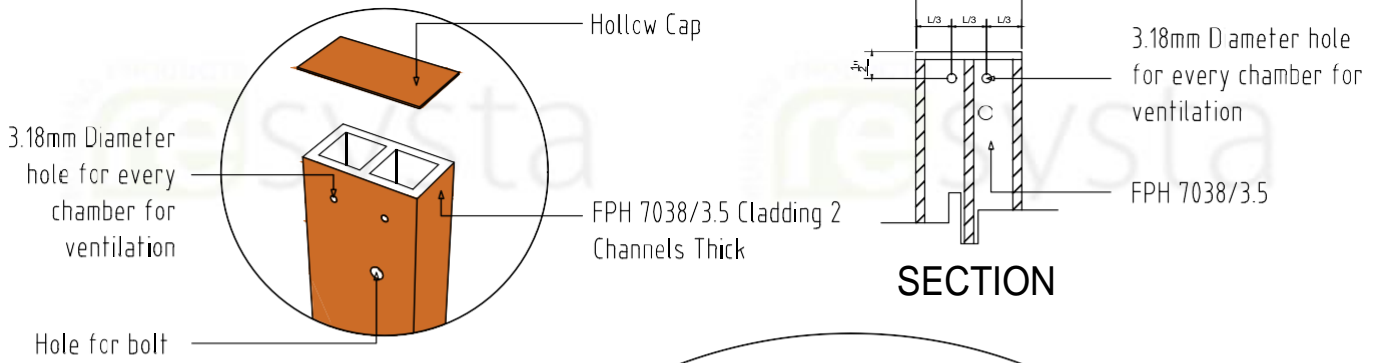
Millimeter (mm)
Inches (") / Foot (')



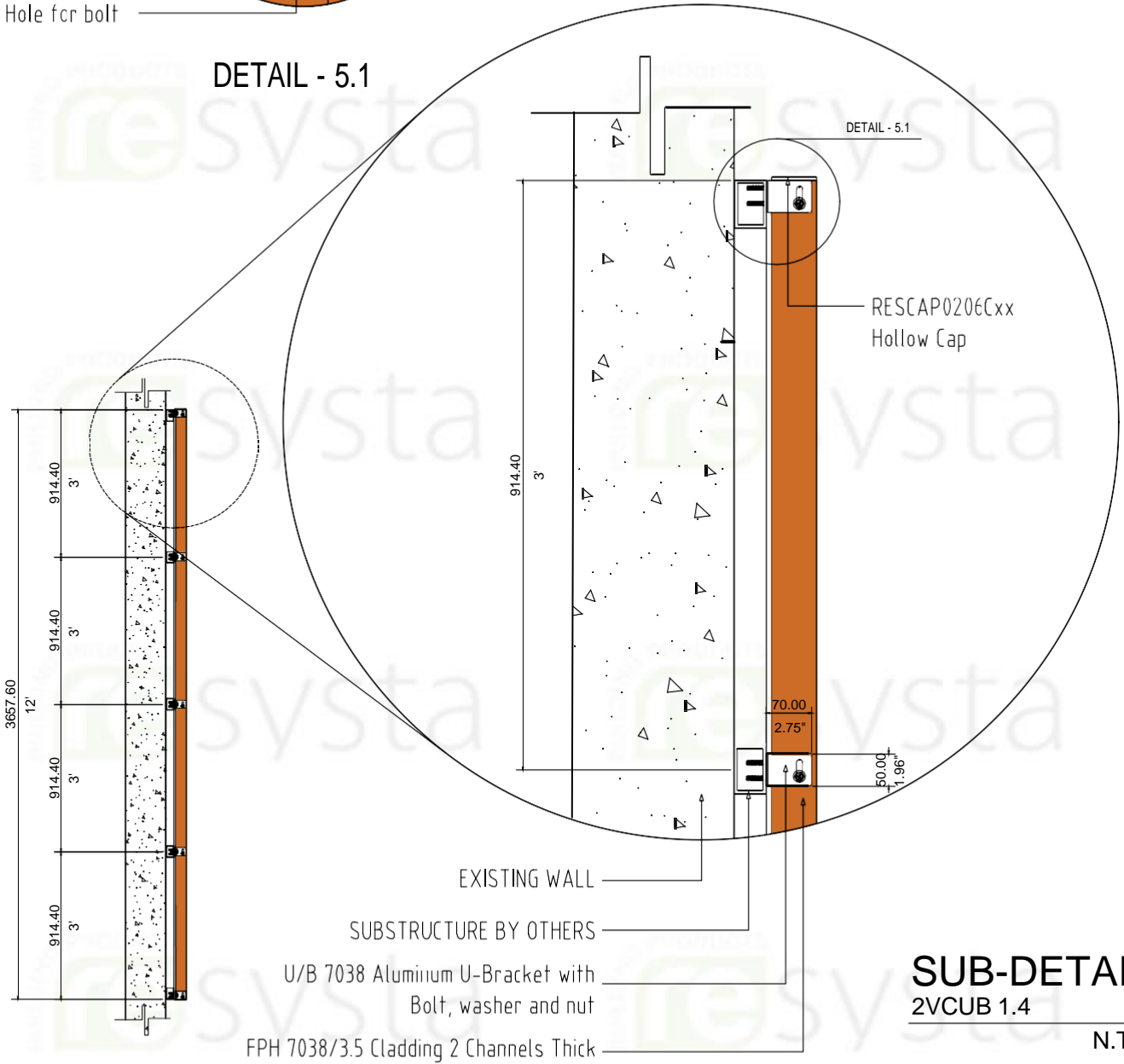
NOTE

THIS DRAWING AS AN INSTRUMENT OF SERVICE, IS THE PROPERTY OF RESYSTA AND AS SUCH MUST NOT BE REPRODUCED OR COPIED IN PART OR IN WHOLE WITHOUT THE PERMISSION OF THE AUTHOR.

TITLE	SHEET CONTENT	CONTINENT
2CH - U BRACKET VERTICAL CLADDING SUB-DETAIL	FRONT ELEVATION	RESYSTA ASIA
	DETAIL-4.C	
SPECIFICATION	DRAWING NO.	DATE
	2VCUB-1.4	27.02.23
	CAD BY:	CHECKED BY:
TYPICAL DRAWING DETAIL	C.R.E	



DETAIL - 5.1



SIDE ELEVATION

DETAIL - 5.0

SUB-DETAIL
2VCUB 1.4

N.T.S

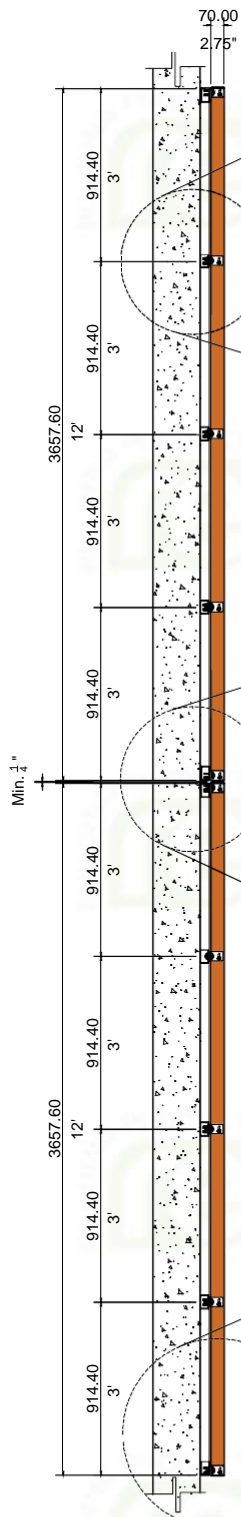
DIMENSION LEGEND	
Millimeter (mm)	
Inches (") / Foot (')	



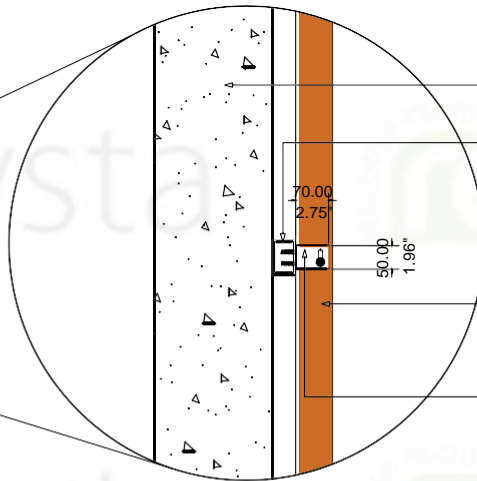
NOTE

THIS DRAWING AS AN INSTRUMENT OF SERVICE, IS THE PROPERTY OF RESYSTA AND AS SUCH MUST NOT BE REPRODUCED OR COPIED IN PART OR IN WHOLE WITHOUT THE PERMISSION OF THE AUTHOR.

TITLE	SHEET CONTENT	CONTINENT
2LH - U BRACKET VERTICAL CLADDING SUB-DETAIL	SIDE ELEVATION	RESYSTA ASIA
	DETAIL-5.0	
	DETAIL-5.1	
SPECIFICATION	SECTION	DATE
TYPICAL DRAWING DETAIL	DRAWING NO. 2VCUB-1.5	27.02.23
	CAD BY: C.R.E	CHECKED BY:

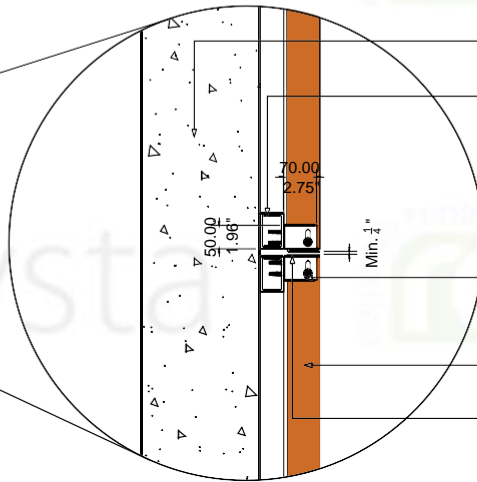


**MULTI-BOARD
SIDE ELEVATION**



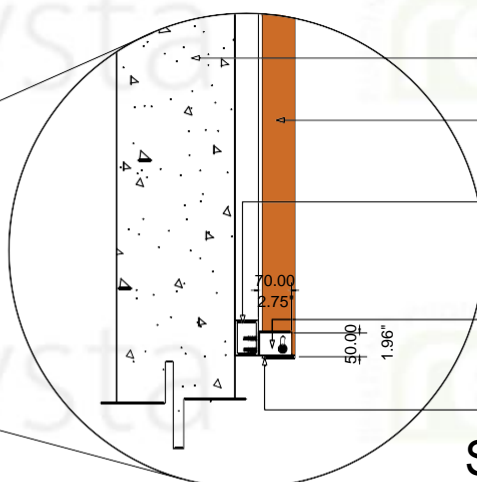
DETAIL - 6.0

- EXISTING WALL
- SUBSTRUCTURE BY OTHERS
- 70.00
2.75"
- 50.00
1.96"
- FPH 7038/3.5 Cladding 2 Channels Thick
- U/B 7038 Aluminum U-Bracket with Bolt, washer and nut



DETAIL - 7.0

- EXISTING WALL
- SUBSTRUCTURE BY OTHERS
- 70.00
2.75"
- U/B 7038 Aluminum U-Bracket with Bolt, washer and nut
- FPH 7038/3.5 Cladding 2 Channels Thick
- Hollow Cap
- Min. 1/4"



DETAIL - 8.0

- EXISTING WALL
- FPH 7038/3.5 Cladding 2 Channels Thick
- SUBSTRUCTURE BY OTHERS
- 70.00
2.75"
- U/B 7038 Aluminum U-Bracket with Bolt, washer and nut
- Hollow Cap
- 50.00
1.96"

**SUB-DETAIL
2VCUB 1.6**

N.T.S

DIMENSION LEGEND	
	Millimeter (mm)
	Inches (") / Foot (')



NOTE

THIS DRAWING AS AN INSTRUMENT OF SERVICE, IS THE PROPERTY OF RESYSTA AND AS SUCH MUST NOT BE REPRODUCED OR COPIED IN PART OR IN WHOLE WITHOUT THE PERMISSION OF THE AUTHOR.

TITLE	SHEET CONTENT	CONTINENT
2LH - U BRACKET VERTICAL CLADDING SUB-DETAIL	MULTI-BRD SIDE ELEV.	RESYSTA ASIA
	DETAIL-6.0	
	DETAIL-7.0	
SPECIFICATION	DETAIL-8.0	
TYPICAL DRAWING DETAIL	DRAWING NO.	DATE
	2VCUB-16	27.02.23
	CAD BY:	CHECKED BY:
	C.R.E.	