

NOTE
THIS DRAWING AS AN INSTRUMENT OF SERVICE, IS THE PROPERTY OF RESYSTA AND AS SUCH MUST NOT BE REPRODUCED OR COPIED IN PART OR IN WHOLE WITHOUT THE PERMISSION OF THE AUTHOR.

TITLE
BUTT JOINT
HORIZONTAL CLADDING
FOR HF LONG CLIP DETAIL

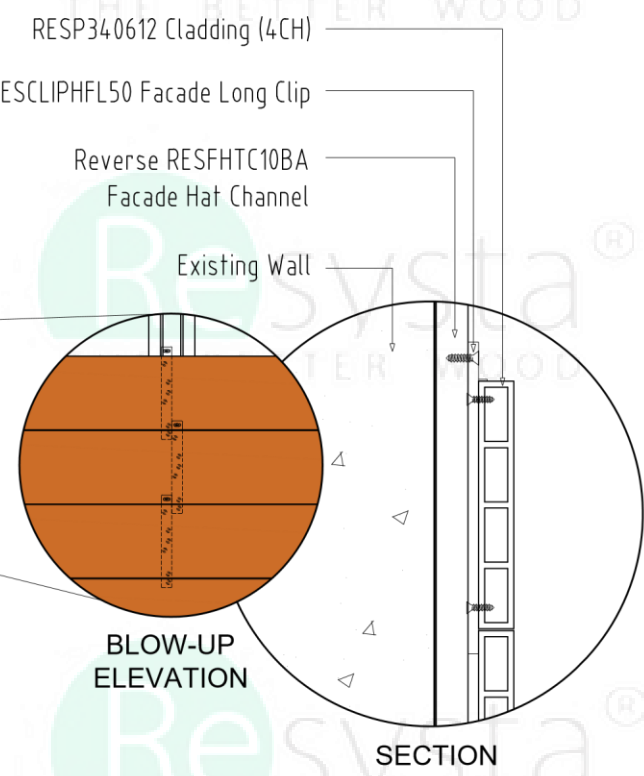
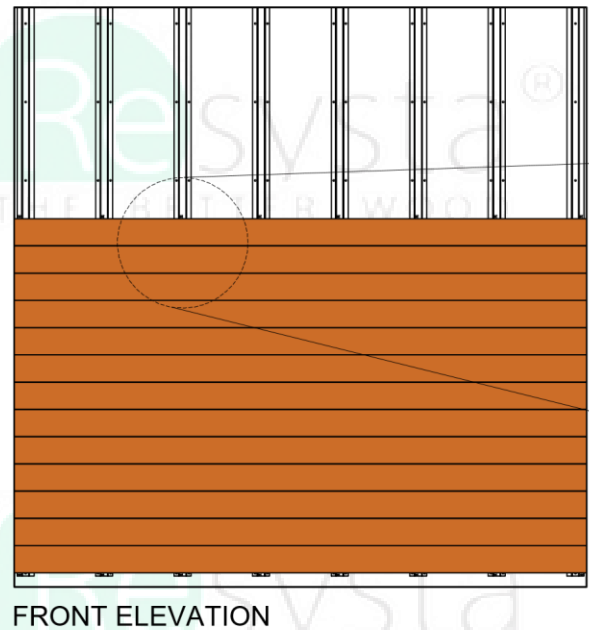
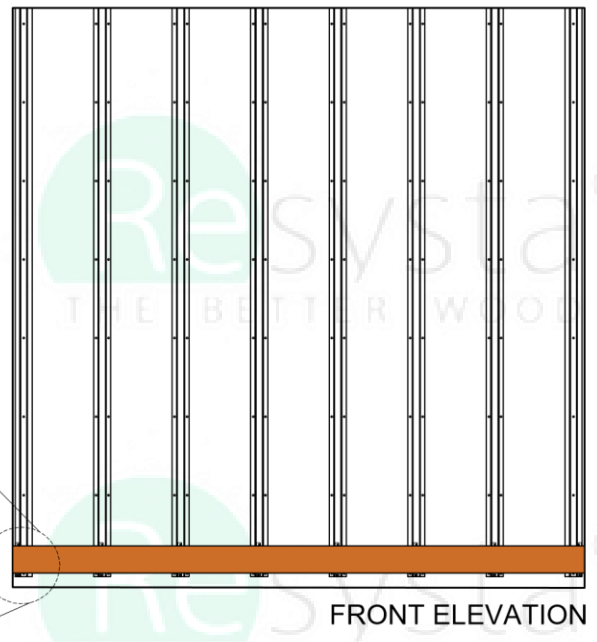
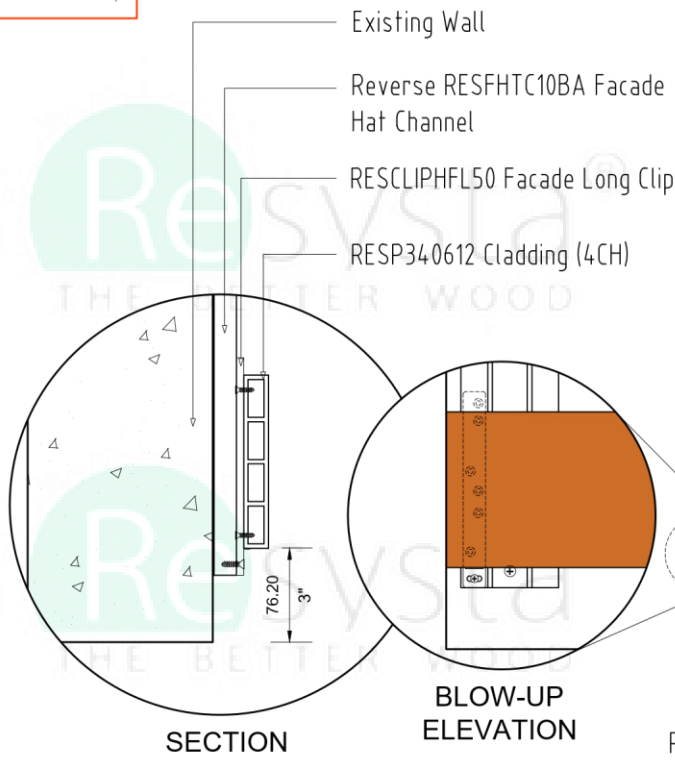
SPECIFICATION
TYPICAL DRAWING
DETAIL

CAD BY: M.T.C. CHECKED BY: C.R.E.

SHEET CONTENT
ISOMETRIC VIEW
BLOW-UP DETAIL

SHEET SIZE A3	DRAWING NO. BJHCD-LC-01
DATE 27.10.22	REVISION 0

DIMENSION LEGEND
 Millimeter (mm)
 Inches (") / Foot (')



Note:
 Each HF Clip requires 3 screws. Two are #8 x 1/2" SMS screws to attach the Clip to the Resysta Wall Cladding board and one is to attach the wall cladding board with the clip to the battens.

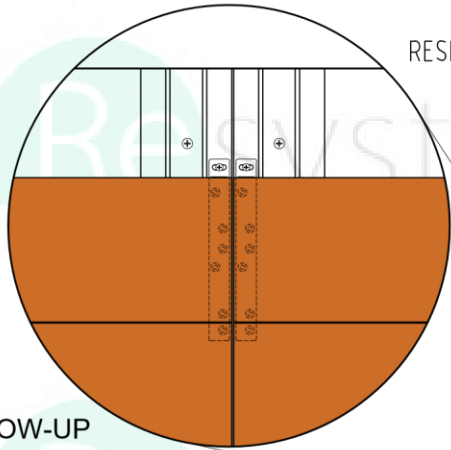
SUB-DETAIL
 BJHCD-LC-1.1
 SCALE
 0 500 1000



NOTE	TITLE	SHEET CONTENT	
	BUTT JOINT HORIZONTAL CLADDING HF LONG CLIP SUB-DETAIL	ELEVATION BLOW-UP DETAIL SECTION	
THIS DRAWING AS AN INSTRUMENT OF SERVICE, IS THE PROPERTY OF RESYSTA AND AS SUCH MUST NOT BE REPRODUCED OR COPIED IN PART OR IN WHOLE WITHOUT THE PERMISSION OF THE AUTHOR.	SPECIFICATION	DRAWING NO.	DATE
	TYPICAL DRAWING DETAIL	BJHCD-LC-02	27.10.22
		CAD BY:	CHECKED BY:
	M.T.C.	C.R.E.	

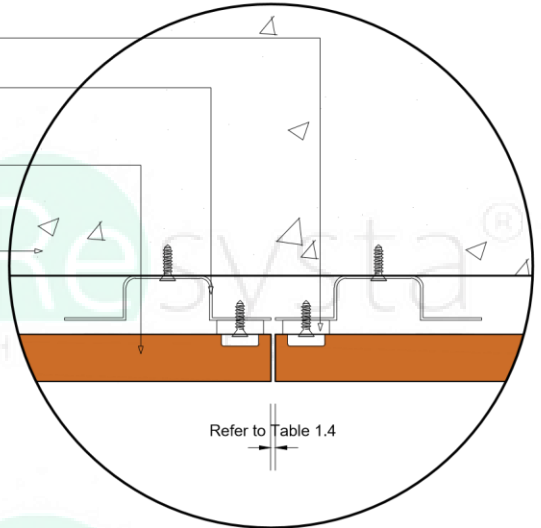
DIMENSION LEGEND

Millimeter (mm)
Inches (") / Foot (')



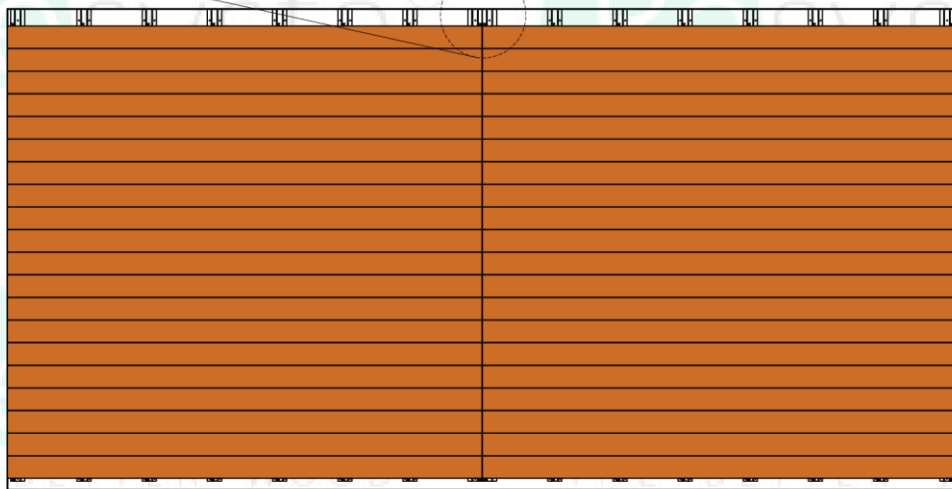
BLOW-UP ELEVATION

RESCLIPHFL50 Facade Long Clip
Reverse RESFHTC10BA
Facade Hat Channel
RESP340612 Cladding (4CH)



Refer to Table 1.4

TOP VIEW

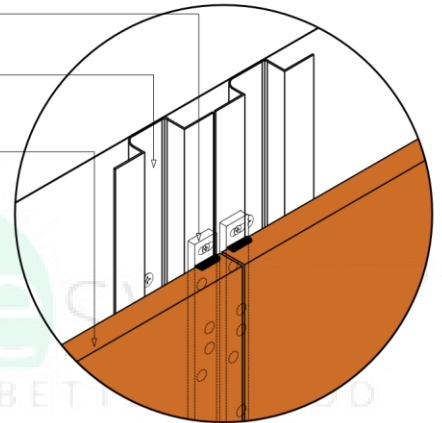


FRONT ELEVATION

SUB-DETAIL
BJHCD-LC-1.2



RESCLIPHFL50 Facade Long Clip
Reverse RESFHTC10BA
Facade Hat Channel
RESP340612 Cladding (4CH)



ISOMETRIC VIEW

Table 1.4 "Resysta Expansion"

Resysta Wall Cladding Board Gap Guide					
Temperature at Installation	Gap of Wall cladding Board				Multi Board Gap
	Below 30 0F	60 0F	90 0F	120 0F	
Amount for Wall cladding Profile - Length of 12 ft.	7/16"	5/16"	3/16"	0"	1/4"

Note :

This is an option for installation using 3 or more boards abutted end-to-end. When connecting wall cladding boards at the ends, please consider Resysta Expansion.



NOTE

THIS DRAWING IS AN INSTRUMENT OF SERVICE, IS THE PROPERTY OF RESYSTA AND AS SUCH MUST NOT BE REPRODUCED OR COPIED IN PART OR IN WHOLE WITHOUT THE PERMISSION OF THE AUTHOR.

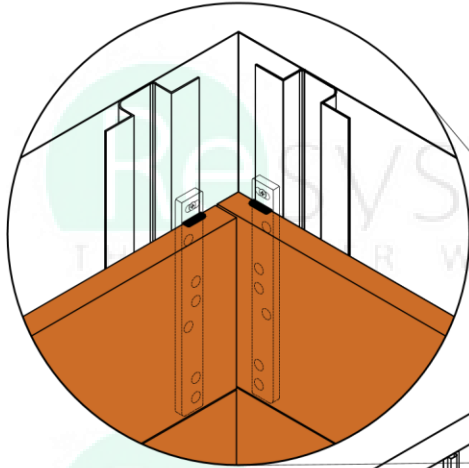
TITLE
BUTT JOINT
HORIZONTAL CLADDING
HF LONG CLIP SUB-DETAIL

SPECIFICATION
TYPICAL DRAWING DETAIL

SHEET CONTENT
ELEVATION
BLOW-UP DETAIL
TOP VIEW

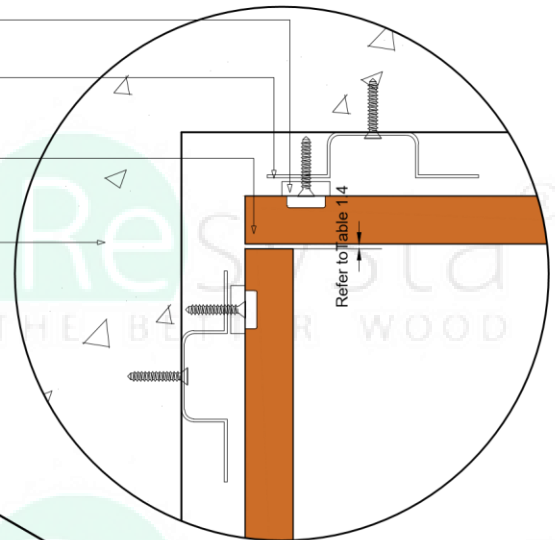
DRAWING NO.	DATE
BJHCD-LC-03	27.10.22
CAD BY:	CHECKED BY:
M.T.C.	C.R.E.

DIMENSION LEGEND
 Millimeter (mm)
 Inches (") / Foot (')

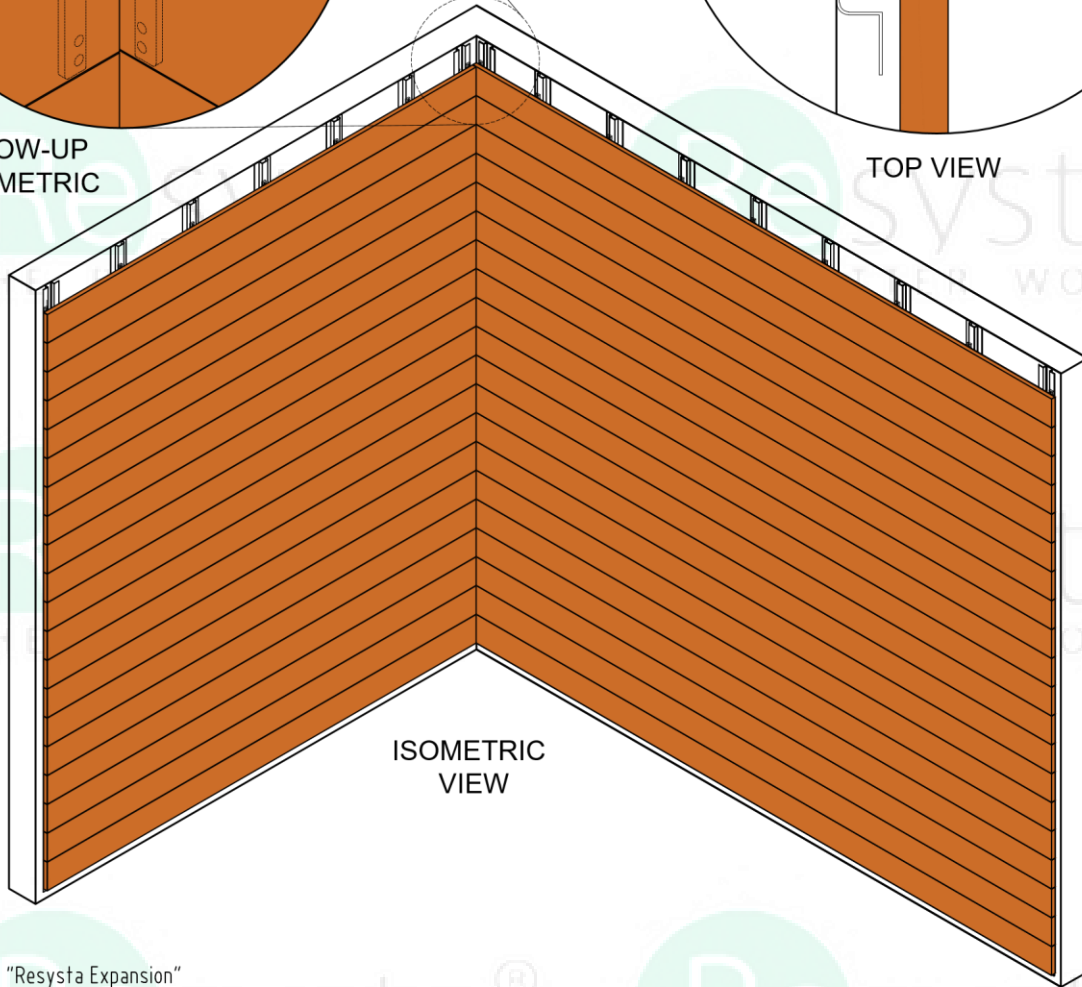


BLOW-UP ISOMETRIC

RESCLIPHFL50 Facade Long Clip
 Reverse RESFHTC10BA Facade Hat Channel
 RESP340612 Cladding (4CH)
 Existing Wall



TOP VIEW



ISOMETRIC VIEW

Table 1.4 "Resysta Expansion"

Resysta Wall Cladding Board Gap Guide					
Temperature at Installation	Gap of Wall cladding Board				Multi Board Gap
	Below 30 OF	60 OF	90 OF	120 OF	
Amount for Wall cladding Profile - Length of 12 ft.	7/16"	5/16"	3/16"	0"	1/4"

SUB-DETAIL
 BJHCD-LC-1.3



Note :
 When connecting wall cladding boards at the ends, please consider Resysta Expansion.



NOTE

THIS DRAWING AS AN INSTRUMENT OF SERVICE, IS THE PROPERTY OF RESYSTA AND AS SUCH MUST NOT BE REPRODUCED OR COPIED IN PART OR IN WHOLE WITHOUT THE PERMISSION OF THE AUTHOR.

TITLE
 BUTT JOINT
 HORIZONTAL CLADDING
 HF LONG CLIP SUB-DETAIL

SPECIFICATION
 TYPICAL DRAWING DETAIL

SHEET CONTENT	
ISOMETRIC VIEW	
BLOW-UP DETAIL	
TOP VIEW	
DRAWING NO.	DATE
BJHCD-LC-04	27.10.22
CAD BY:	CHECKED BY:
M.T.C.	C.R.E

DIMENSION LEGEND

Millimeter (mm)
Inches (") / Foot (')

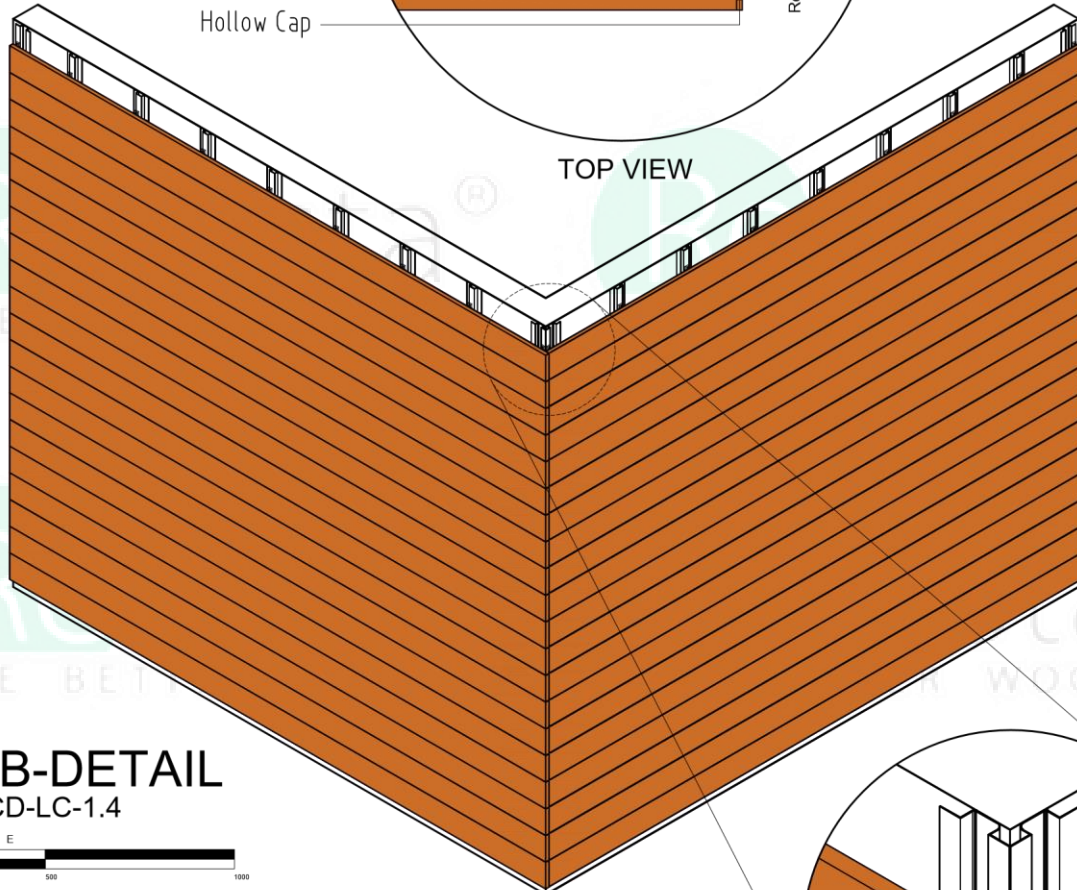
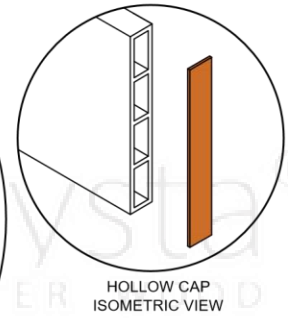
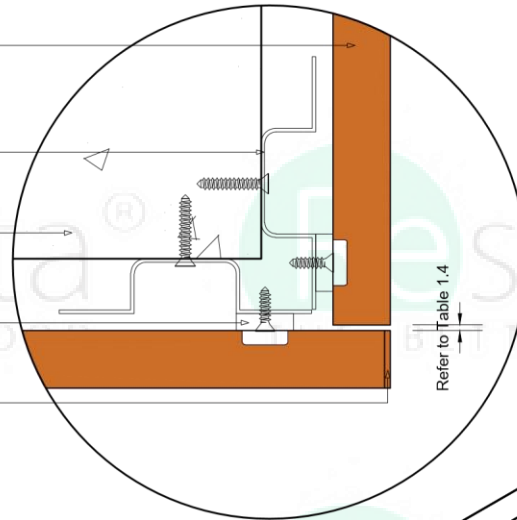
RESP340612 Cladding (4CH)

Reverse RESFHTC10BA
Facade Hat Channel

Existing Wall

RESCLIPHL50 Facade Long Clip

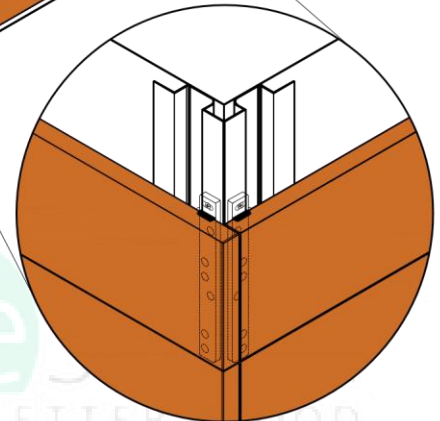
Hollow Cap



SUB-DETAIL
BJHCD-LC-1.4



ISOMETRIC VIEW



BLOW-UP
ISOMETRIC

Table 1.4 "Resysta Expansion"

Resysta Wall Cladding Board Gap Guide					
Temperature at Installation	Gap of Wall cladding Board				Multi Board Gap
	Below 30 OF	60 OF	90 OF	120 OF	
Amount for Wall cladding Profile - Length of 12 ft.	7/16"	5/16"	3/16"	0"	1/4"

Note :

Remove adhesive strip cover film. Center Hollow Cap on the end of the plank and apply with firm pressure all around the center supports.



NOTE

THIS DRAWING AS AN INSTRUMENT OF SERVICE, IS THE PROPERTY OF RESYSTA AND AS SUCH MUST NOT BE REPRODUCED OR COPIED IN PART OR IN WHOLE WITHOUT THE PERMISSION OF THE AUTHOR.

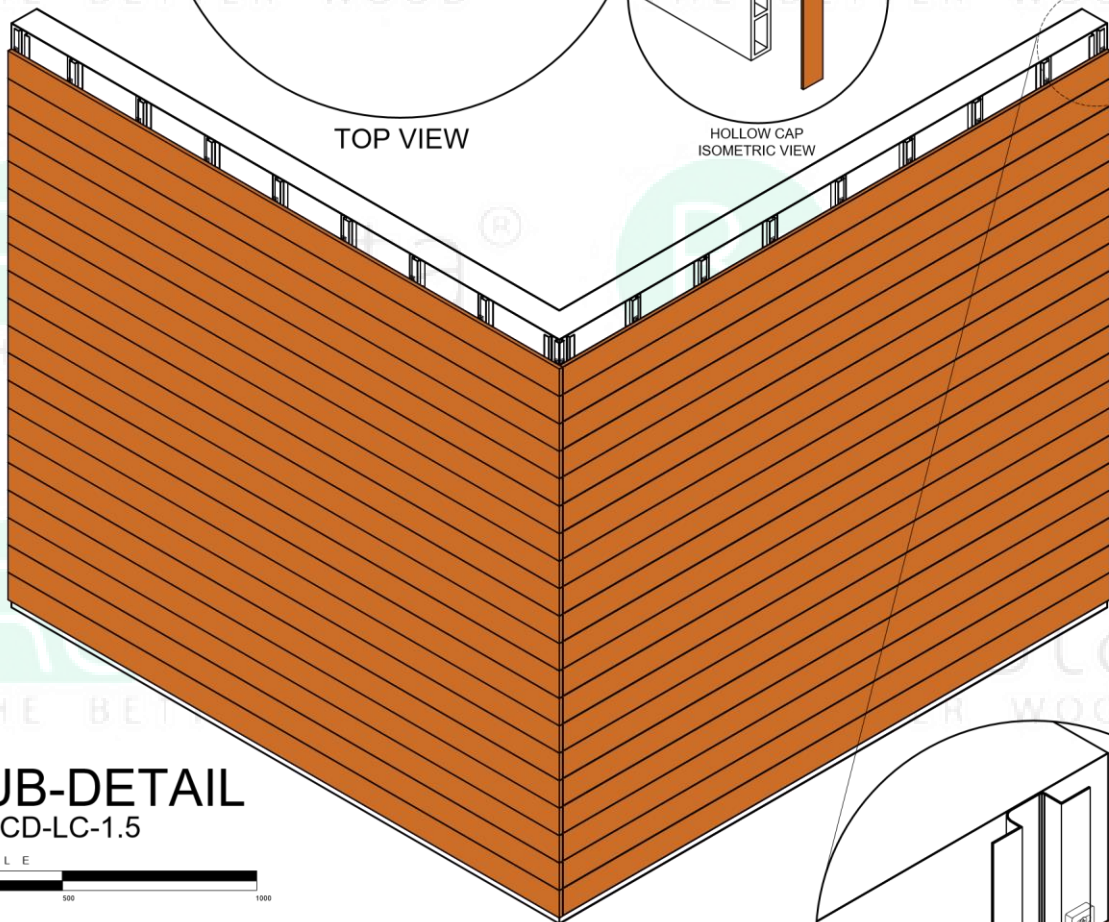
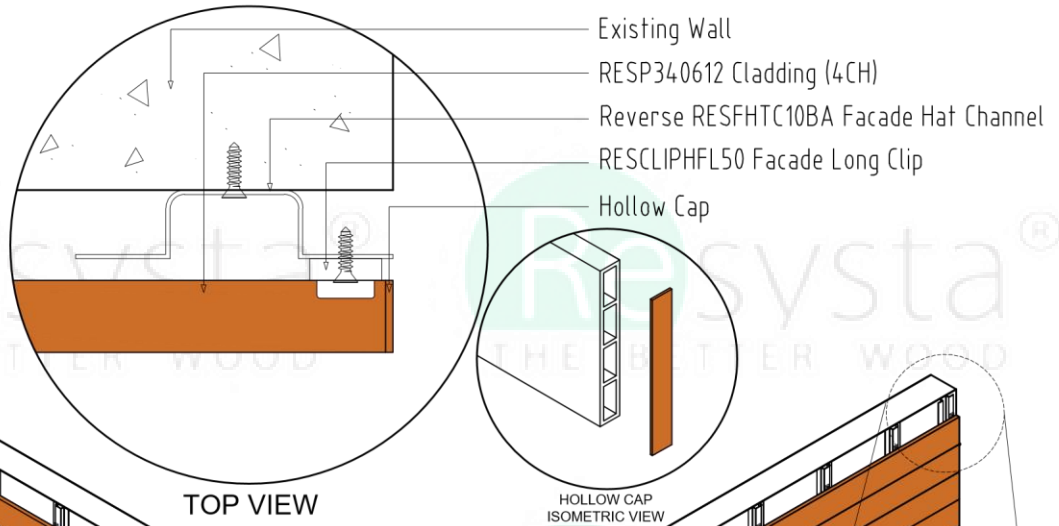
TITLE
BUTT JOINT
HORIZONTAL CLADDING
HF LONG CLIP SUB-DETAIL

SPECIFICATION
TYPICAL DRAWING DETAIL

SHEET CONTENT
ISOMETRIC VIEW
BLOW-UP DETAIL
TOP VIEW

DRAWING NO.	DATE
BJHCD-LC-05	27.10.22
CAD BY:	CHECKED BY:
M.T.C.	C.R.E.

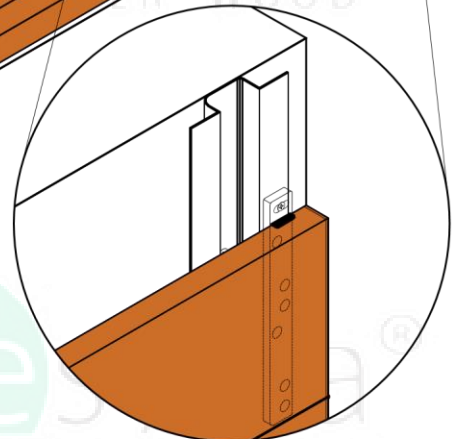
DIMENSION LEGEND
 Millimeter (mm)
 Inches (") / Foot (')



SUB-DETAIL
 BJHCD-LC-1.5



ISOMETRIC VIEW



BLOW-UP ISOMETRIC

Table 1.4 "Resysta Expansion"

Resysta Wall Cladding Board Gap Guide					
Temperature at Installation	Gap of Wall cladding Board				Multi Board Gap
	Below 30 OF	60 OF	90 OF	120 OF	
Amount for Wall cladding Profile - Length of 12 ft.	7/16"	5/16"	3/16"	0"	1/4"

Note :

Be sure that all surfaces are clean and free of debris such as dust, dirt, oils and paints. Remove adhesive strip cover film. Center Hollow Cap on the end of the plank and apply with firm pressure all around the center supports.



NOTE

THIS DRAWING AS AN INSTRUMENT OF SERVICE, IS THE PROPERTY OF RESYSTA AND AS SUCH MUST NOT BE REPRODUCED OR COPIED IN PART OR IN WHOLE WITHOUT THE PERMISSION OF THE AUTHOR.

TITLE
 BUTT JOINT
 HORIZONTAL CLADDING
 HF LONG CLIP SUB-DETAIL

SPECIFICATION
 TYPICAL DRAWING DETAIL

SHEET CONTENT
 ISOMETRIC VIEW
 BLOW-UP DETAIL
 TOP VIEW

DRAWING NO.	DATE
BJHCD-LC-06	27.10.22
CAD BY:	CHECKED BY:
M.T.C.	C.R.E.